

## DYSON THREADED BARS AND RODS

DYSON THREADED BARS – COIL and V THREADS				
BAR DESIGNATION	NOMINAL THREAD SIZE	MINIMUM NET AREA THRU THREADS	NOMINAL WEIGHT	APPROXIMATE THREAD MAJOR DIAMETER
	IN (MM)	in sq (MM SQ)	(KG/M)	IN (MM)
<b>ASTM A615 GRADE 75 FULL-THREADED BAR (coil thread form)</b>				
#6	3/4 (19)	0.44 (284)	1.5 (2.24)	7/8 (22)
#7	7/8 (22)	0.60 (387)	2.0 (3.04)	1 (25)
#8	1 (25)	0.79 (510)	2.7 (3.97)	1-1/8 (29)
#9	1-1/8 (29)	1.00 (645)	3.4 (5.06)	1-1/4 (32)
#10	1-1/4 (32)	1.27 (819)	4.3 (6.40)	1-3/8 (35)
#11	1-3/8 (36)	1.56 (1006)	5.3 (7.91)	1-1/2 (38)
#14	1-3/4 (43)	2.25 (1452)	7.65 (11.38)	1-7/8 (48)
#18	2-1/4 (57)	4.00 (2581)	13.60 (20.24)	2-3/8 (60)
#20	2-1/2 (64)	4.91 (3168)	16.69 (24.84)	2-3/4 (70)
#28	3-1/2 (90)	9.61 (6200)	32.70 (48.60)	2-3/4 (95)
<ul style="list-style-type: none"> <li>Grade 75 threaded bar available in lengths up to 60' lg.</li> <li>Alternate Steel grades are A615 gr 60, A449, A193 gr B7, stainless, Grade 90, etc.</li> <li>Also, threaded on each end is available. A hot gorged bolt head on one bar end is an option.</li> </ul>				
<b>ASTM A722 GRADE 150 FULL-THREADED BAR (coil thread form)</b>				
1" (26mm)	1 (26)	0.85 (548)	3.01 (4.48)	1-1/8" (29)
1-1/4" (32mm)	1-1/4 (32)	1.25 (806)	4.39 (6.54)	1-7/16" (37)
1-3/8" (36mm)	1-3/8 (36)	1.58 (1019)	5.56 (8.28)	1-9/16" (40)
1-3/4" (46mm)	1-3/4 (46)	2.58 (1664)	9.10 (13.54)	2" (51)
2-1/2" (64mm)	2-1/2 (64)	5.16 (3331)	18.20 (27.10)	2-3/4" (70)
<ul style="list-style-type: none"> <li>Grade 150 ksi bar available in lengths up to 50' long (1-3/4" dia. and above is 40' long and certified as 150 ksi only). Also, threaded on each end is available</li> </ul>				
<b>DYSON ALSO OFFERS –</b> <ul style="list-style-type: none"> <li>CENTRALIZERS</li> <li>GROUT TUBING</li> <li>ROD END CAPS</li> <li>GREASE AND SHEATHING</li> <li>SPHERICAL HEX NUTS</li> <li>RESIN CARTRIDGES</li> <li>MANY FORMS OF CORROSION PROTECTION (see back of packet)</li> </ul>				

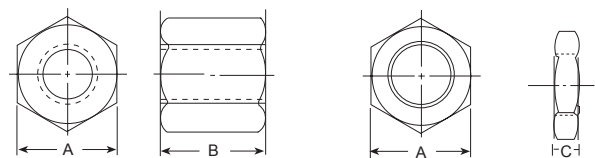
DYSON THREADED RODS		
NOMINAL TIE ROD	UPSET END THREAD SIZE & TPI	NOMINAL TIE ROD WEIGHT- APPROX.
	IN	LBS/LF
<b>FORGED UPSET TIE RODS</b>		
1-1/4"	1-1/2"-6	4.18
1-3/8"	1-3/4"-5	5.05
1-1/2"	2"-4.5	6.01
1-5/8"	2"-4.5	7.06
1-3/4"	2-1/4"-4.5	8.19
1-7/8"	2-1/4"-4.5	9.40
2"	2-1/2"-4	10.69
2-1/8"	2-1/2"-4	12.07
2-1/4"	2-3/4"-4	13.53
2-3/8"	2-2/3"-4	15.08
2-1/2"	3-1/4"-4	16.71
2-5/8"	3-1/4"-4	18.42
2-3/4"	3-1/2"-4	20.21
2-7/8"	3-1/2"-4	22.09
3"	3-3/4"-4	24.06
3-1/8"	3-3/4"-4	26.10
3-1/4"	4"-4	28.23
3-3/8"	4"-4	30.45
3-1/2"	4-1/4"-4	32.74
3-5/8"	4-1/4"-4	35.12
3-3/4"	4-1/2"-4	37.59
4"	4-1/2"-4	42.77
<b>DYSON Upset Tie Rod Features –</b> <ul style="list-style-type: none"> <li>Tie rods are manufactured to all standard specifications and grades.</li> <li>Tie rods are manufactured in lengths up to 60' long.</li> <li>All sizes of Heavy Hex nuts (Full and Jam) plus flat washers are stock items.</li> <li>Most standard sizes of turnbuckles and clevises are stock items.</li> <li>Plate washers and other accessories are available on special order.</li> <li>Other upset end sizes are available.</li> </ul>		

## DYSON COIL THREAD NUTS (full and jam nuts)

Bar Size	"A" (A.F.) IN/mm	"B" (full nut) IN/mm	"C" (jam nut) IN/mm
<b>GRADE 75 THREADED BAR</b>			
#6	1.250/31.8	1.625/41.3	0.375/9.5
#7	1.438/36.5	1.750/44.5	0.438/11.1
#8	1.625/41.3	2.000/50.8	0.500/12.7
#9	1.875/47.6	2.000/50.8	0.563/14.3
#10	2.000/50.8	2.187/55.5	0.625/15.9
#11	2.250/57.2	2.406/61.1	0.688/17.5
#14	2.750/69.9	3.250/82.6	0.938/23.8
#18	3.500/88.9	3.500/88.9	1.000/25.4
#20	4.000/101.6	4.000/101.6	1.125/28.6
#28	5.500/139.7	6.000/152.4	1.563/39.7
<b>GRADE 150 THREADED BAR</b>			
1" (26mm)	1.750/44.5	2.000/50.8	0.500/12.7
1-1/4" (32mm)	2.250/57.2	2.500/63.5	0.500/12.7
1-3/8" (36mm)	2.500/63.5	2.750/69.9	0.563/14.3
1-3/4" (46mm)	3.000/76.2	3.500/88.9	0.750/19.1
2-1/2" (64mm)	4.250/108.0	4.750/120.7	1.000/25.4

### Dyson Coil Thread Nut Features –

- All threaded items are 100% melted and manufactured in the United States.
- All 'full' coil threaded nuts are designed to exceed 100% of the bars ultimate strength.
- All coil threaded nuts can be produced with any of the various locknut and/or sealing nut elements as developed by Dyson. Ask one of our Salespeople or Engineers.



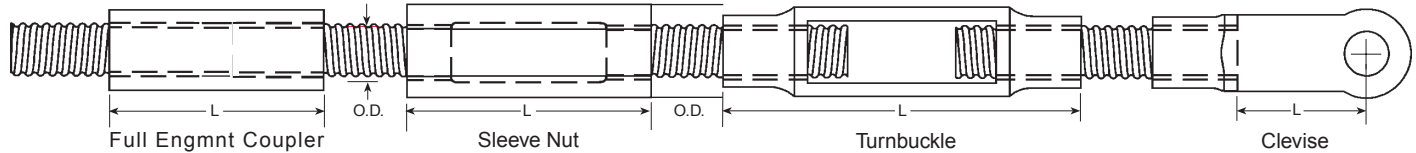
Full Coil Nut

Jam Coil Nut

## DYSON THREADED BAR CONNECTORS

BAR SIZE	FULL ENGAGEMENT COUPLER		SLEEVE NUT		TURNBUCKLE	CLEVISE
	"O.D." IN/mm	"L" IN/mm	"O.D." INCHES	"L" INCHES	"L" INCHES	"L" INCHES
<b>GRADE 75 THREADED BAR</b>						
#6	1.250/31.8	3.5000/88.9	1-1/4"	5-3/4"	9-1/4"	Dimension on applic
#7	1.375/34.9	4.000/101.6	1-1/2"	6-1/4"	9-1/2"	Dimension on applic
#8	1.625/41.3	4.500/114.3	1-5/8"	7"	11"	Dimension on applic
#9	1.875/47.6	5.000/127.0	1-7/8"	7-1/4"	11"	Dimension on applic
#10	2.000/50.8	5.500/139.7	2-1/8"	7-3/4"	12-1/2"	Dimension on applic
#11	2.250/57.2	6.000/152.4	2-1/4"	8-1/2"	12-3/4"	Dimension on applic
#14	2.875/73.0	8.000/203.2	2-7/8"	10-1/2"	15-1/2"	Dimension on applic
#18	3.500/88.9	9.000/228.6	3-3/4"	11-3/4"	17"	Dimension on applic
#20	4.000/101.6	9.500/241.3	4"	13-1/2"	19"	Dimension on applic
#28	5.500/139.7	12.000/304.8	5-1/2"	18-1/2"	24"	Dimension on applic
<b>GRADE 150 KSI BAR</b>						
1" (26mm)	1.750/44.5	4.250/108.0	2"	7-1/4"	12"	Dimension on applic
1-1/4" (32mm)	2.125/54.0	5.250/133.4	2-3/8"	8-1/2"	14"	Dimension on applic
1-3/8" (36mm)	2.500/60.3	5.750/146.1	2-3/4"	9-1/2"	15-1/2"	Dimension on applic
1-3/4" (46mm)	3.000/76.2	8.500/215.9	3-1/2"	12"	18"	Dimension on applic
2-1/2" (64mm)	4.250/108.0	10.000/254.0	4-1/2"	15"	21-1/2"	Dimension on applic

- Dyson Connector Features:
- Full engagement couplers are available as threaded thru couplers and without the full engagement feature.
  - Sleeve nuts and turnbuckles have right hand and left hand threads.
  - Sleeve nuts (hex) and couplers (rd.) can be either hex or round shaped – please specify.



## DYSON COIL THREAD NUTS – (hex and spherical)

## DYSON STEEL PLATES and HARDENED WASHERS

BAR SIZE	HEX NUTS/SPHERICAL NUTS			ASTM A-36 STEEL PLATES		HRD WASHERS
	"A" (A.F.) IN/mm	"B" IN/mm	"D" IN/mm	T x W x L INCHES	T x W x L INCHES	"O.D." INCHES
<b>GRADES 40 &amp; 60 REBAR, ONLY (HEX NUTS)</b>						
#6	1.250/31.8	0.734/18.6	N.A.	3/8" x 6" x 6"		1-3/4"
#7	1.438/36.5	0.859/21.8	N.A.	1/2" x 6" x 6"		2"
#8	1.625/41.3	0.984/25.0	N.A.	1/2" x 8" x 8"		2"
#9	1.813/46.1	1.109/28.2	N.A.	1/2" x 8" x 8"		2-1/4"
#10	2.000/50.8	1.219/31.0	N.A.	3/4" x 8" x 8"		2-1/2"
#11	2.188/55.6	1.344/34.1	N.A.	1" x 9" x 9"		2-3/4"
#14	2.750/69.9	1.719/43.7	N.A.			3-1/4"
#18	3.500/88.9	2.203/56.0	N.A.			4-1/2"
#20	3.875/98.4	2.453/62.3	N.A.			5"
#28	5.375/136.5	3.438/87.3	N.A.			7"
<b>GRADE 150 KSI BAR (SPHERICAL NUTS)</b>						
1" (26mm)	1.750/44.5	2.250/57.2	2.500/63.5	1" x 4" x 7"	1-1/4" x 7" x 7"	2-1/4"
1-1/4" (32mm)	2.250/57.2	2.750/70.0	3.125/79.4	1-1/4" x 5" x 8"	1-1/2" x 9" x 9"	2-3/4"
1-3/8" (36mm)	2.500/63.5	3.250/82.6	3.625/92.1	1-1/2" x 5" x 10"	1-3/4" x 10" x 10"	3"
1-3/4" (46mm)	3.000/76.2	3.500/88.9	4.000/101.6	1-3/4" x 8" x 12"	2-1/4" x 12" x 12"	3-3/4"
2-1/2" (64mm)	4.250/108.0	4.750/120.7	6.000/152.4	2-1/2" x 12" x 14"	3" x 15" x 15"	5"

- Dyson Products Features:
- Spherical nuts must be used with dished plate washers – see drawings below.

